

**COIN-OPERATED**



**A**

ALSO ON SHOW AT THE ATEI WAS AM3'S LATEST ARCADE RACER, MANX TT RACES. NOT ONLY DOES THIS IMPROVE UPON THE ALREADY EXCELLENT SEGA RALLY, BUT IT ALSO GETS YOU OUT OF THE SAFETY OF A SOUPED UP STREET CAR AND ON TO A HIGHLY DANGEROUS TOP-SPEED MOTORBIKE. ARE YOU READY FOR THE NEXT SPEED LEVEL? SAM HICKMAN IS.

If anyone was ever in doubt that Sega are responsible for the best arcade machines in the world, they would have only had to walk around the ATEI show to put all their worries to rest. Out of all the arcade machines on offer from top companies such as Namco, and Midway, Sega were far and away the most popular choice for the majority of visitors. The Sega stand had a constant queue for most games (even the crap ones like Cool Riders) and at times, the crowd gathered around the six-player Manx TT machine was reaching a ridiculous size.

There's a few reasons for this. Of course, all the machines were on free play all day, so it was inevitable that there would be queues. But that's by the by. The main reason everyone was so excited was this was a new game from AM3 – fast becoming one of the most well-known game programming teams in the world. When they make a new game, it's really something to get excited about. However, there's another reason too. Almost every Sega coin-op game will eventually be converted to the Saturn, so it's also a good gauge of how far your little black box will be pushed 6-9 months after the coin-op is released.



Aaah! He's going to overtake! Do something – quickly! Call the traffic police immediately or there could be a serious accident.



Too late, bozo! Actually, these bits are just from the intro part of the game, so the guy shown is a kind of "ghost rider". Spooky.



As you can see, AM3 have really managed to get a feeling of speed into the graphics.



Is that a church, or just an ordinary tower? If you live in the Isle of Man, please tell us.



It's unclear whether AM3 actually visited the TT races in the Isle of Man for essential "research"...



...but they certainly had a lot of help from motorcyclists and companies when they were working on the movements of the bike.



Ready yourself for the race of your life...



...getting off to good start helps of course...



...otherwise you'll end up in seventh place.

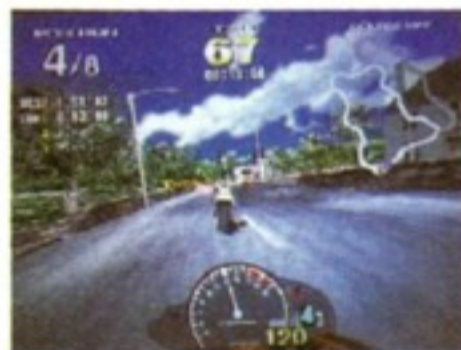




# YOU KNOW



There's no funny animals like zebras to discover in Manx TT. Well it is the Isle of Man. And you know what they're like. Any spare wildlife is chopped up and used as a sacrifice to the devil.



## SEE FOR YOURSELF!

Although AM3 will be converting Manx TT to the Saturn sometime over the next year, they certainly won't be showing any screenshots for a few months yet. So, the best thing you can do if you want to see what's coming up on the Saturn soon, is get down to the arcades, arm yourself with plenty of pound coins and see it for yourself!

## BETTER THAN THE REAL THING!

As you've probably gathered by now, Manx TT is an almost exact replica of the Isle of Man TT Races held annually between June and September. The TT race is one of the most celebrated events in the whole festival and has attracted hundreds of thousands of visitors since the race was first held in 1907. There's only one course for competitors to follow in the real thing, but it wouldn't have been much cop if AM3 had decided to use just the one course in their arcade game. So, as well as reproducing the original Mountain course (which incidentally is difficult mode in the arcade game) AM3 have created their own course too. This is slightly easier than the TT race and is a good entry point if you've never played the game before.



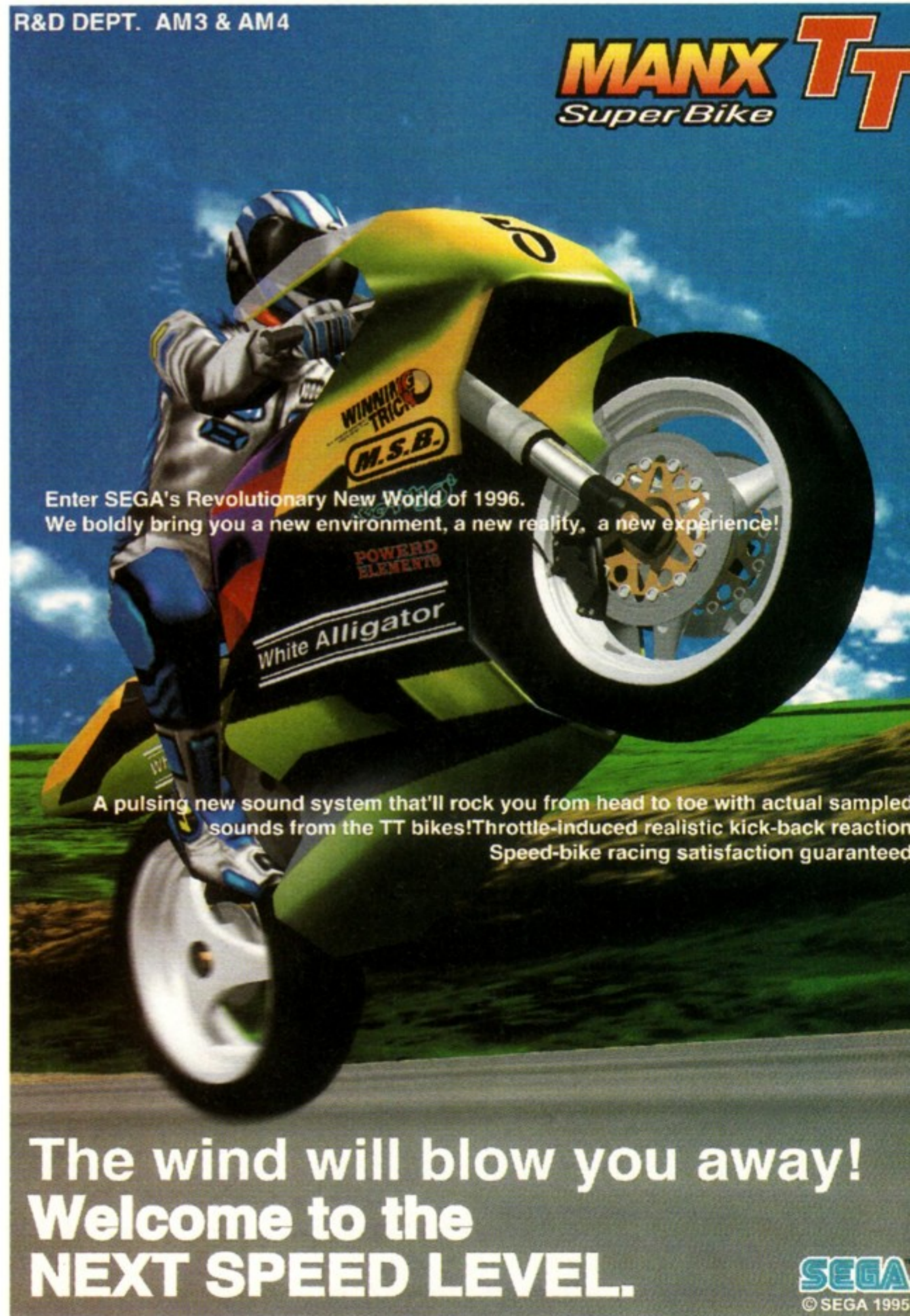
Doesn't leave you much room to get through the middle, does it?



To make it round the corners intact, you'll have to brush up on your "leaning" skills.

R&D DEPT. AM3 & AM4

**MANX TT**  
Super Bike



Enter SEGA's Revolutionary New World of 1996. We boldly bring you a new environment, a new reality, a new experience!

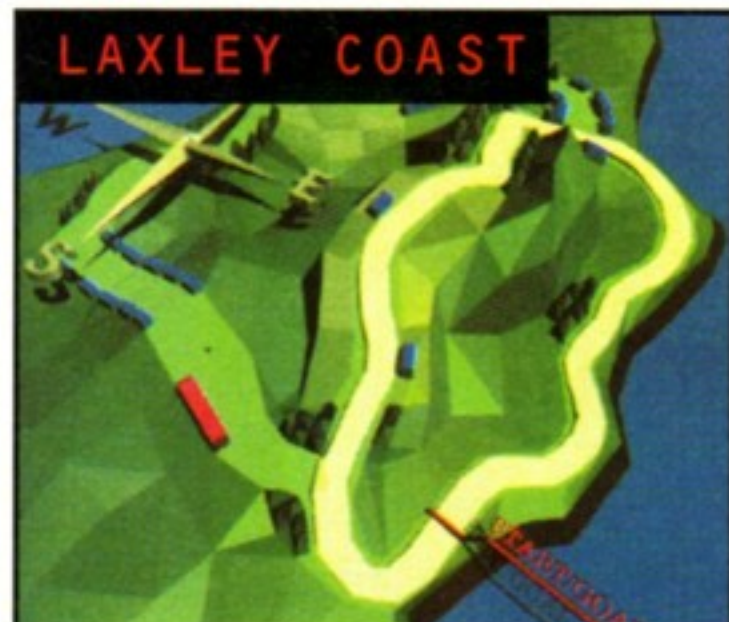
A pulsing new sound system that'll rock you from head to toe with actual sampled sounds from the TT bikes! Throttle-induced realistic kick-back reaction. Speed-bike racing satisfaction guaranteed.

The wind will blow you away!  
Welcome to the  
**NEXT SPEED LEVEL.**

SEGA  
© SEGA 1995

## THE LAXLEY COURSE

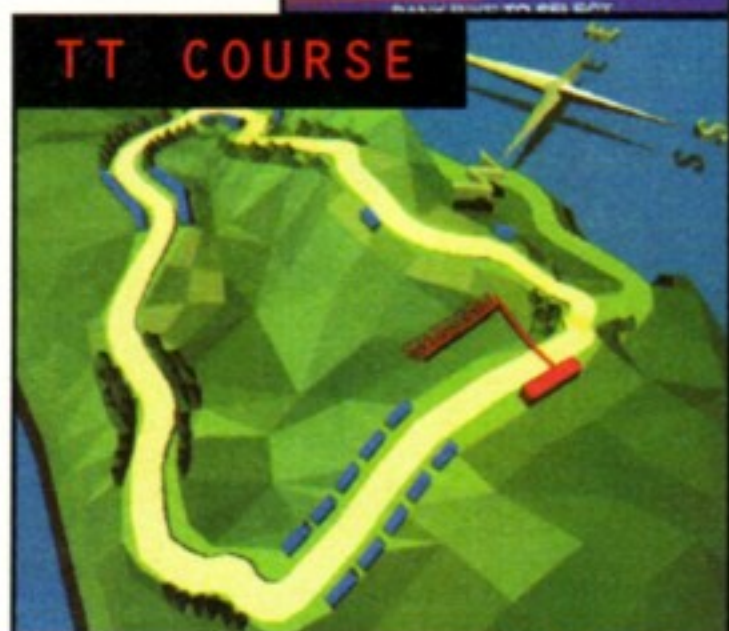
This course is AM3's own creation, although it looks pretty much the same as the original TT track. That's because this imaginary course is also set in the Isle of Man and uses the very same roads – it's just not as twisty-turny that's all. It takes you through the main parts of the town on the Isle of Man and out into a bit of the countryside too, and the visuals are incredibly smooth. Unfortunately, you can't choose the bike you wish to ride, but it doesn't matter too much anyway, as the bike you're provided with has exactly the same powers and skills as all the others. The race takes place over three laps.



LAXLEY COAST

## THE TT COURSE

This is the course that's based on the original TT race. It takes you through the town, up into the forest and out over the hills. As the course is a real road that's used by everyday people, there's no change in terrain, so you'll have the chance to record some blisteringly fast times – provided you're used to the control system. This course is more complicated than the first course and to place anywhere in the race you'll need to be quite an expert driver. There's a couple of really tricky jumps to manoeuvre as well, and if you're not careful, your machine will spin out of control!



TT COURSE

## THE CROWD

The crowd is really well animated in Manx TT and the faces are all pretty clear too! In fact, parts of the crowd are made up of the people from both Sega Europe and Sega Japan. But seeing as no one knows who they are, it makes little difference to the game!



## THE MACHINE WANTS TO PLAY!

At the moment, it's uncertain when the Saturn version of Manx TT will appear, as AM3 really will have their work cut out to download the code. Also, it's likely that extra features will be programmed into the game for the home conversion, which will present them with yet another challenge. However, AM3 wouldn't decide to convert the title at all if they didn't think that they could do a good job, so Saturn owners can look forward to a real treat sometime in the near future. Expect the first Saturn shots to appear within the next four months.



The Manx bike shown from a behind-the-cabinet view.



You don't have to wear real biker boots to play the arcade version of Manx.



Feel this machine pulsate between your quivering thighs. That's about standard, isn't it?



This is the only bike on offer in the race, so make the most of it.



Manx can either be played in a single cabinet or on a link-up with up to eight players. The bikes themselves actually feel very solid, and come equipped with everything you can expect to find on a real bike – brakes, throttle, gear change, start button (well there has to be some compromises), and the bike actually shifts around according to the direction you're driving in, making for some very meaty play.



An eight player battle is by far and away the best way to play Manx, and set ups such as the one shown here should be appearing in arcades any day now. In fact, we've just heard that Manx TT cabinets have completely sold out in the UK!

**YOU  
KNOW  
NOTHING**

**THE MACHINE  
WANTS**

**TO PLAY**



...And they're off! Getting a good start is essential to placing highly.



The forest parts of the track break up the rest of the graphics nicely. They do.



Very discreet advertising is obviously part of any racing game, and as you can see, Manx TT is no exception. Oh well, I suppose it makes it all the more authentic.



This course's layout is true to the original Manx TT race held in the Isle of Man every summer.



The majority of this race takes place in the town, with crowds of people on hand to cheer you through all three laps.

